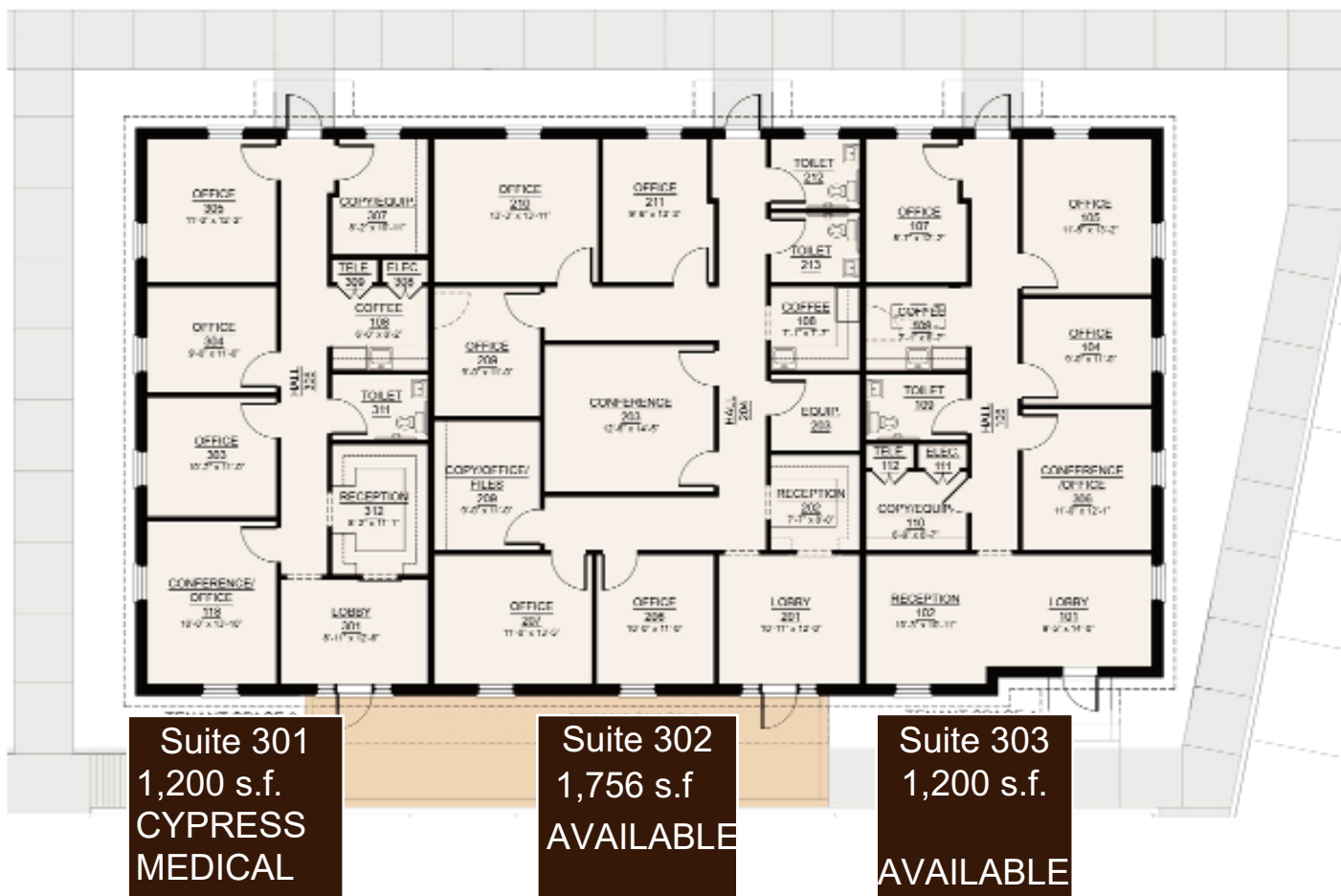




9'0" MSL Finish Floor Elevation

# 435 Corporate Drive



**Professional - Medical - Financial**

Lease - Sale - Build to Suit

5 - 7 1/2 - 10 year Leases

For Additional Information, Contact:

Henry J. Richard ~ Principal

T 985/856-5203

henry@richarddevelopment.com

